



# **SUMMIT MEDICAL**

---

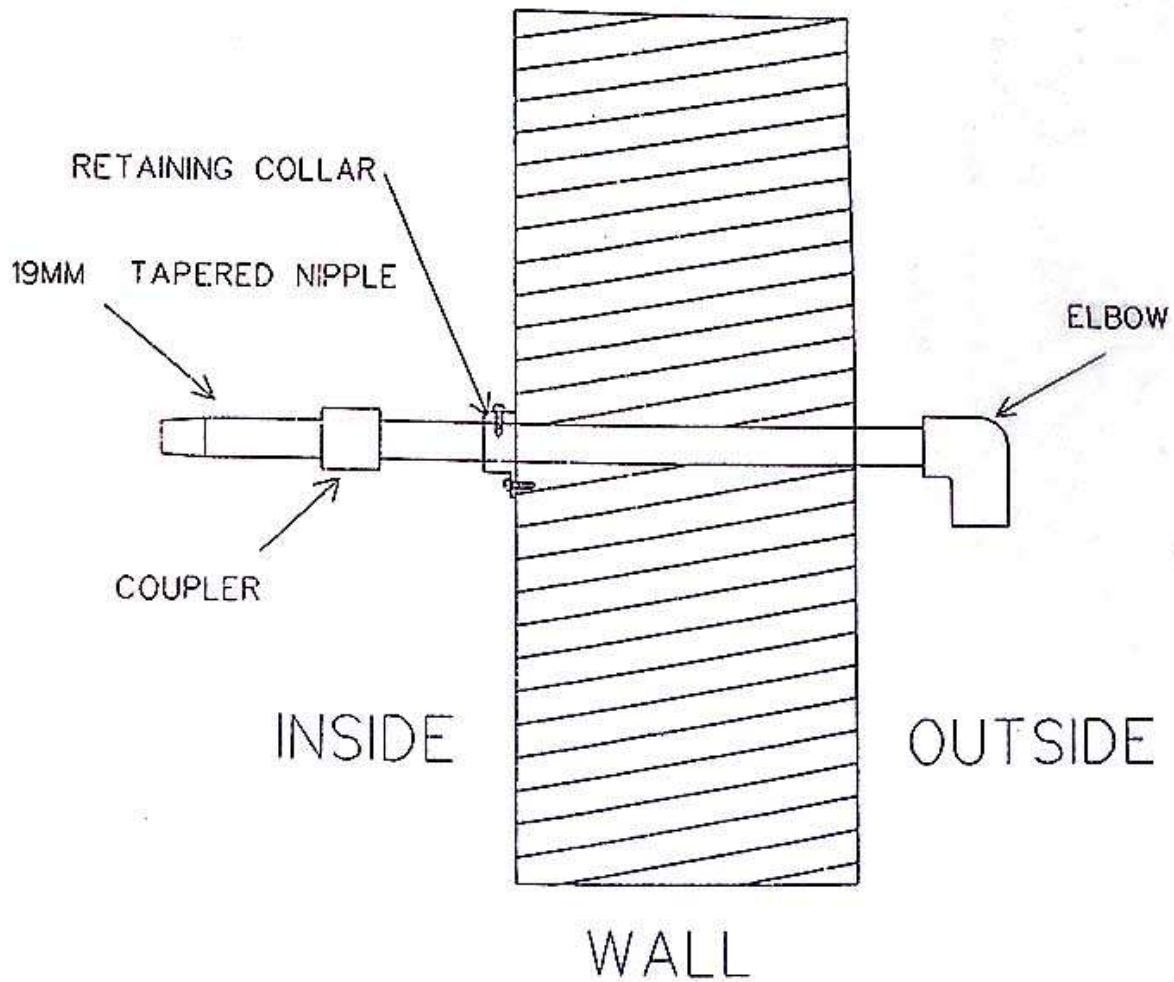
## **Equipment Company**

### **DIRECTIONS FOR INSTALLING 19MM EVAC KIT PN: AA-00-0591**

1. Use 7/8" drill to put hole through wall.
2. Assemble parts as shown.
  - A. Use standard clear PVC cement.
3. Grey retaining ring goes on inside wall.
  - A. Use Molley screws or anchor screws if going into drywall or cinderblock.
  - B. You will need to drill a small hole (approx. 1/8") through top of collar and through PVC pipe.
    1. Screw small sheet metal screw through grey retaining ring into PVC. This will prevent pipe from moving as you attach and remove hose.
4. Use silicone caulking around PVC pipe on outside where pipe goes through wall to seal it.
5. Connect flexible blue 19mm evac tubing to 19mm tapered nipple on one end and pop-off valve (or bag bleed valve) on the other end.

# SUMMIT MEDICAL

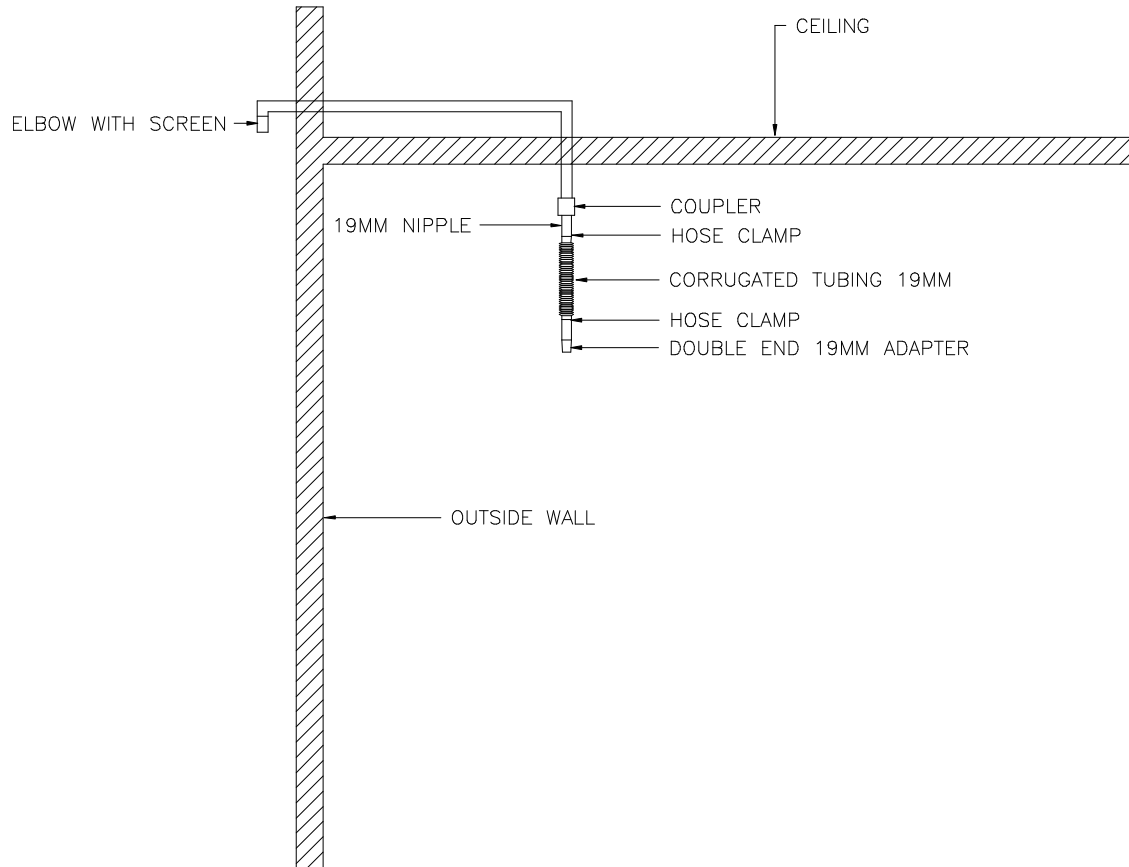
Equipment Company



# SUMMIT MEDICAL

Equipment Company

## ANESTHESIA EVACUATION SYSTEM



- Note: 1. Distance of less than 15 feet use 1/2" I.D. Schedule 40 PVC.  
2. Distance of 15 feet to 20 feet use 3/4" I.D. Schedule 40 PVC.

1. Keep 90 degree elbows to minimum--no more than 4 on any line.
2. Depending upon the height of your ceiling and the desired drop down, you will need to adjust rigid 1/2" I.D. PVC coming down out of ceiling to proper length to accommodate tubing.

# SUMMIT MEDICAL

---

## Equipment Company

3. Because corrugated tubing can only be cut-off at approximately at one foot intervals, you may wish to make rigid portion longer and use only one segment of corrugated tubing.
4. Use the hose clamps to secure corrugated tubing to adapters.
5. Retractor maybe used to keep evac line above head height—then pull down for use.

